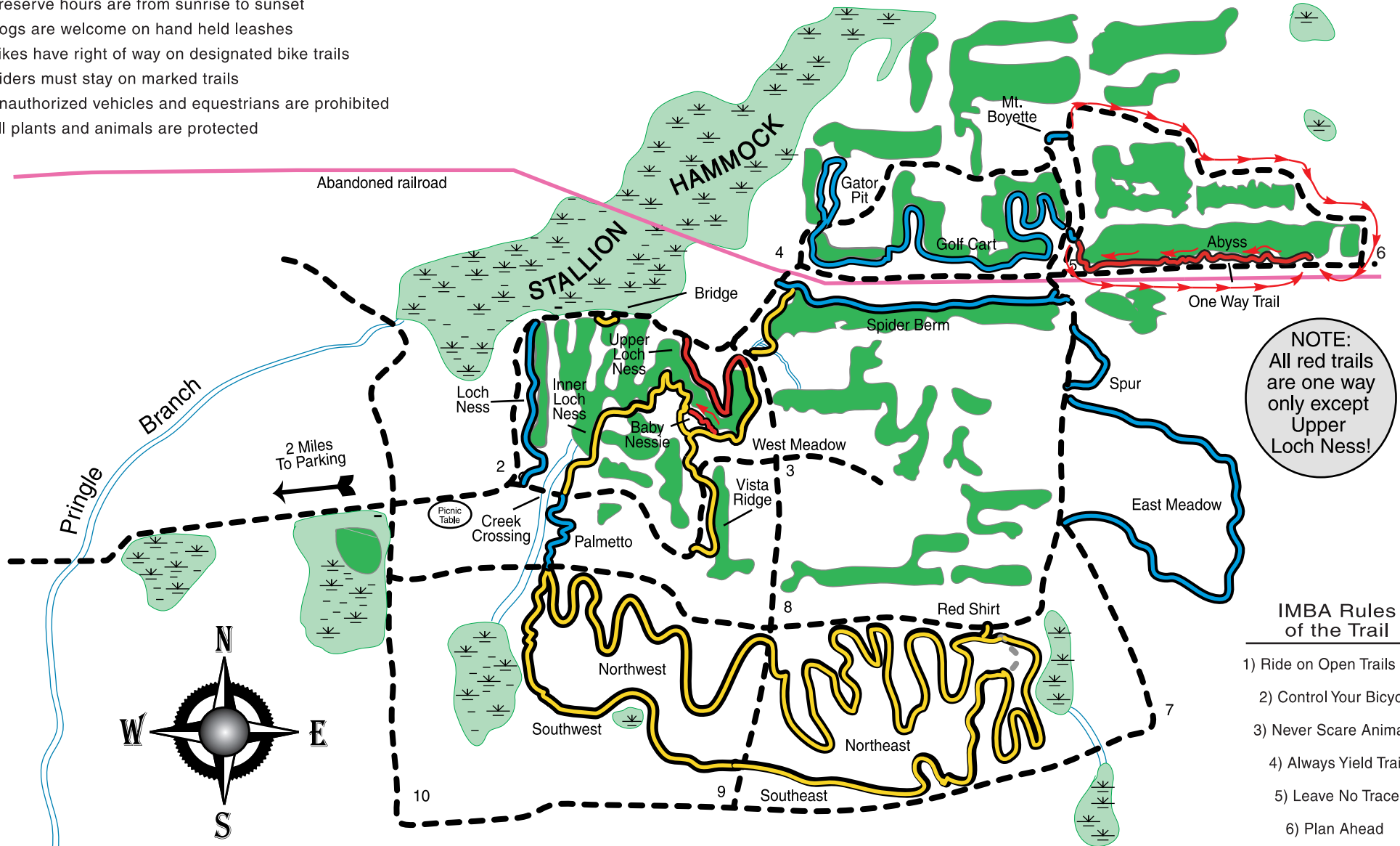


Balm Boyette Nature Preserve Rules

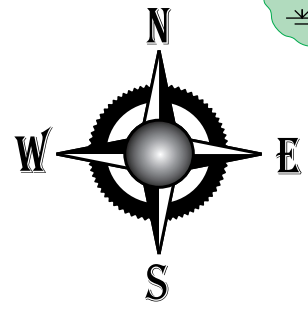
- Preserve hours are from sunrise to sunset
- Dogs are welcome on hand held leashes
- Bikes have right of way on designated bike trails
- Riders must stay on marked trails
- Unauthorized vehicles and equestrians are prohibited
- All plants and animals are protected



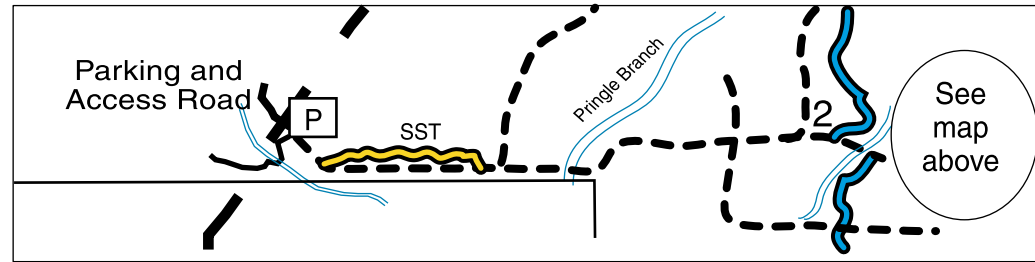
NOTE:
All red trails
are one way
only except
Upper
Loch Ness!

IMBA Rules of the Trail

- 1) Ride on Open Trails Only
- 2) Control Your Bicycle
- 3) Never Scare Animals
- 4) Always Yield Trail
- 5) Leave No Trace
- 6) Plan Ahead



2 Miles
To Parking



Double Track		Single Track	
Creek		Easy	
Lakes		Intermediate	
Swamp/Marsh		Harder	
		All red trails one way except Upper Loch Ness!	

SWAMP
mountain
bike club